

**MANAGEMENT RESOURCE GROUP, INC.**  
2392 Mount Vernon Road, Suite 103, Atlanta, Georgia 30338

July 24, 2014

Mr. Edward S. Mayer  
Executive Director  
Housing Authority of the County of Butte  
2039 Forest Avenue  
Suite 10  
Chico, CA 95928

Re: Utility Allowance Estimates 2014 - 2015

Dear Mr. Mayer:

Enclosed are HACB's new utility allowance estimates that reflect current rate schedules and consumption for units in the Public Housing Program. Natural gas rates, electric rates, and water rates have risen significantly.

Another significant change has been the calculation of water/sewer allowances to be applied to only those apartments where an individual water meter has been installed and the resident is paying the bill directly to the provider.

Upon review of the allowance estimates if you have any questions, please contact me.

Sincerely,

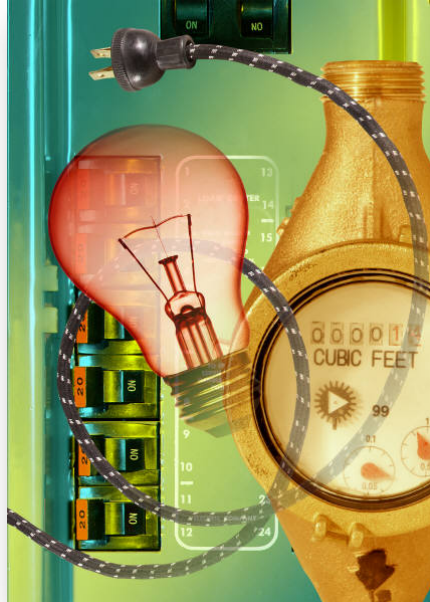


Howard S. Fleisig, Executive Vice President  
Management Resource Group, Inc.

HSF/MR

Enclosure(s)

# Public Housing Utility Allowance Estimates



Prepared For The  
  
Housing Authority of  
the County of Butte  
Chico, California

July 2014

---

---

**Management Resource Group, Inc.**

2392 Mount Vernon Road, Suite 103 / Atlanta, Georgia 30338

Tel: 770♦396♦9856 / Fax: 678♦954♦8026

Email: [atlmrg@comcast.net](mailto:atlmrg@comcast.net)

## TABLE CONTENTS

Summary

CA 43-1A, Gridley

CA 43-1B, Gridley

CA 43-2A, Biggs

CA 43-2B, Biggs

CA 43-3, Chico

CA 43-4, Gridley

CA 43-10, Winston Gardens

CA 43-13, Rhodes Terrace and Shelton Oaks

CA 43-14, Oroville

CA 43-15, Oroville

Water/Sewer Tables

Current Utility Rate Schedules

## **SUMMARY**

**HOUSING AUTHORITY OF THE COUNTY OF BUTTE  
CHICO, CALIFORNIA**

**UTILITY ALLOWANCE ESTIMATES**

**FY 2014/2015**

<b>CA 43-1A, Gridley</b>			
	<b>2 Bedroom</b>	<b>3 Bedroom</b>	<b>4 Bedroom</b>
Electricity	46.00	51.00	55.00
Natural Gas	30.00	36.00	42.00
Water/Sewer	71.00	72.00	74.00
<b>Total</b>	<b>\$ 147.00</b>	<b>\$ 159.00</b>	<b>\$ 171.00</b>

<b>CA 43-1B, Gridley</b>					
	<b>1 Bedroom ADA</b>	<b>2 Bedroom</b>	<b>3 Bedroom</b>	<b>4 Bedroom</b>	<b>5 Bedroom</b>
Electricity	48.00	46.00	51.00	55.00	61.00
Natural Gas	18.00	30.00	36.00	42.00	48.00
Water/Sewer	68.00	71.00	72.00	74.00	75.00
<b>Total</b>	<b>\$ 134.00</b>	<b>\$ 147.00</b>	<b>\$ 159.00</b>	<b>\$ 171.00</b>	<b>\$ 184.00</b>

<b>CA 43-2A, Biggs</b>				
	<b>1 Bedroom ADA</b>	<b>2 Bedroom</b>	<b>3 Bedroom</b>	<b>4 Bedroom</b>
Electricity	45.00	43.00	47.00	52.00
Natural Gas	18.00	30.00	36.00	42.00
Water/Sewer	119.00	119.00	119.00	119.00
<b>Total</b>	<b>\$ 182.00</b>	<b>\$ 192.00</b>	<b>\$ 202.00</b>	<b>\$ 213.00</b>

<b>CA 43-2B, Biggs</b>		
	<b>2 Bedroom</b>	<b>3 Bedroom</b>
Electricity	43.00	47.00
Natural Gas	30.00	36.00
Water/Sewer	119.00	119.00
<b>Total</b>	<b>\$ 192.00</b>	<b>\$ 202.00</b>

**Note:** *The Housing Authority of the County of Butte is in the process of installing individual water meters on each apartment. When this has been done, that apartment would be responsible to the water/sewer provider for the billing and an allowance would then be applied.*

**HOUSING AUTHORITY OF THE COUNTY OF BUTTE  
CHICO, CALIFORNIA**

**UTILITY ALLOWANCE ESTIMATES**

**FY 2014/2015**

<b>CA 43-3, Chico</b>				
	<b>1 Bedroom</b>	<b>2 Bedroom</b>	<b>3 Bedroom</b>	<b>4 Bedroom</b>
Electricity	22.00	24.00	26.00	29.00
Natural Gas	25.00	30.00	35.00	41.00
Water/Sewer	41.00	44.00	47.00	50.00
<b>Total</b>	<b>\$ 88.00</b>	<b>\$ 98.00</b>	<b>\$ 108.00</b>	<b>\$ 120.00</b>

<b>CA 43-3, Chico – ADA</b>			
	<b>1 Bedroom</b>	<b>2 Bedroom</b>	<b>3 Bedroom</b>
Electricity	25.00	29.00	32.00
Natural Gas	17.00	21.00	25.00
Water/Sewer	41.00	44.00	47.00
<b>Total</b>	<b>\$ 83.00</b>	<b>\$ 94.00</b>	<b>\$ 104.00</b>

<b>CA 43-4, Gridley</b>				
	<b>1 Bedroom</b>	<b>2 Bedroom</b>	<b>3 Bedroom</b>	<b>4 Bedroom</b>
Electricity	44.00	46.00	51.00	55.00
Natural Gas	25.00	30.00	36.00	42.00
Water/Sewer	69.00	71.00	72.00	74.00
<b>Total</b>	<b>\$ 138.00</b>	<b>\$ 147.00</b>	<b>\$ 159.00</b>	<b>\$ 171.00</b>

<b>CA 43-10, Winston Gardens</b>		
	<b>1 Bedroom</b>	<b>2 Bedroom</b>
Electricity	46.00	54.00
Natural Gas	15.00	18.00
<b>Total</b>	<b>\$ 61.00</b>	<b>\$ 72.00</b>

**Note:** *The Housing Authority of the County of Butte is in the process of installing individual water meters on each apartment. When this has been done, that apartment would be responsible to the water/sewer provider for the billing and an allowance would then be applied.*

**HOUSING AUTHORITY OF THE COUNTY OF BUTTE  
CHICO, CALIFORNIA**

**UTILITY ALLOWANCE ESTIMATES**

**FY 2014/2015**

<b>CA 43-13, Rhodes Terrace and Shelton Oaks</b>		
	<b>2 Bedroom</b>	<b>3 Bedroom</b>
Electricity	23.00	26.00
Natural Gas	26.00	30.00
Water/Sewer	44.00	46.00
<b>Total</b>	<b>\$ 93.00</b>	<b>\$ 102.00</b>

<b>CA 43-14, Oroville</b>	
	<b>3 Bedroom</b>
Electricity	25.00
Natural Gas	33.00
Water/Sewer	34.00
<b>Total</b>	<b>\$ 92.00</b>

<b>CA 43-15, Oroville</b>	
	<b>3 Bedroom</b>
Electricity	28.00
Natural Gas	31.00
Water/Sewer	44.00
<b>Total</b>	<b>\$ 103.00</b>

---

**Note:** *The Housing Authority of the County of Butte is in the process of installing individual water meters on each apartment. When this has been done, that apartment would be responsible to the water/sewer provider for the billing and an allowance would then be applied.*

**CA 43-1A, Gridley**



### ANNUAL ELECTRICAL CONSUMPTION ITEMIZATION (kWh)

<u>Unit Type</u>	<u>Lights</u>	<u>Refrigerator</u>	<u>Fans/Heat</u>	<u>DHW</u>	<u>Cooking</u>	<u>Misc</u>	<u>Total</u>
2 Duplex End	1161	578	105			818	2662
3 Duplex End	1260	594	120			1028	3002
4 Duplex End	1376	600	111			1273	3360

### ANNUAL NATURAL GAS CONSUMPTION ITEMIZATION (Therms)

<u>Unit Type</u>	<u>Heat</u>	<u>DHW</u>	<u>Cooking</u>	<u>Other</u>	<u>Total</u>
2 Duplex End	142	152	33	0	327
3 Duplex End	180	174	36	0	390
4 Duplex End	222	204	40	0	466

### MONTHLY ELECTRICAL CONSUMPTION (kWh)

Unit Type	Jan	Feb	Mar	Apr	May	Jun	Jul	Aug	Sep	Oct	Nov	Dec	Avg.
2 Duplex End	236	228	226	221	217	213	213	213	214	216	227	237	222
3 Duplex End	266	258	255	250	245	241	240	240	241	244	256	267	250
4 Duplex End	295	287	285	279	275	271	271	271	271	274	286	296	280

### MONTHLY ELECTRICAL COST

Unit Type	Jan	Feb	Mar	Apr	May	Jun	Jul	Aug	Sep	Oct	Nov	Dec	Avg.
2 Duplex End	\$48	\$47	\$47	\$46	\$46	\$45	\$45	\$45	\$45	\$45	\$47	\$49	\$46
3 Duplex End	\$53	\$52	\$51	\$51	\$50	\$49	\$49	\$49	\$49	\$50	\$51	\$53	\$51
4 Duplex End	\$57	\$56	\$56	\$55	\$54	\$54	\$54	\$54	\$54	\$54	\$56	\$57	\$55

### MONTHLY NATURAL GAS CONSUMPTION (Therms)

Unit Type	Jan	Feb	Mar	Apr	May	Jun	Jul	Aug	Sep	Oct	Nov	Dec	Avg.
2 Duplex End	46	36	33	26	21	16	15	15	16	20	35	47	27
3 Duplex End	57	44	40	32	24	18	18	18	18	23	42	58	33
4 Duplex End	69	53	48	38	28	21	20	20	21	27	50	70	39

### MONTHLY NATURAL GAS COST

Unit Type	Jan	Feb	Mar	Apr	May	Jun	Jul	Aug	Sep	Oct	Nov	Dec	Avg.
2 Duplex End	\$49	\$39	\$36	\$29	\$24	\$19	\$18	\$18	\$19	\$23	\$38	\$50	\$30
3 Duplex End	\$60	\$47	\$43	\$35	\$27	\$21	\$21	\$21	\$21	\$26	\$45	\$61	\$36
4 Duplex End	\$75	\$56	\$51	\$41	\$31	\$24	\$23	\$23	\$24	\$30	\$53	\$76	\$42

**CA 43-1B, Gridley**

### ANNUAL ELECTRICAL CONSUMPTION ITEMIZATION (kWh)

<u>Unit Type</u>	<u>Lights</u>	<u>Refrigerator</u>	<u>Fans/Heat</u>	<u>DHW</u>	<u>Cooking</u>	<u>Misc</u>	<u>Total</u>
2 Duplex End	1161	578	105			818	2662
3 Duplex End	1260	594	120			1028	3002
4 Single Family Other	1376	600	111			1273	3360
5 Single Family Other	1464	611	131			1597	3803
1 Duplex-ADA End	512	567	105		933	707	2824

### ANNUAL NATURAL GAS CONSUMPTION ITEMIZATION (Therms)

<u>Unit Type</u>	<u>Heat</u>	<u>DHW</u>	<u>Cooking</u>	<u>Other</u>	<u>Total</u>
2 Duplex End	142	152	33	0	327
3 Duplex End	180	174	36	0	390
4 Single Family Other	222	204	40	0	466
5 Single Family Other	262	226	43	0	531
1 Duplex-ADA End	142	35	0	0	177

### MONTHLY ELECTRICAL CONSUMPTION (kWh)

Unit Type	Jan	Feb	Mar	Apr	May	Jun	Jul	Aug	Sep	Oct	Nov	Dec	Avg.
2 Duplex End	236	228	226	221	217	213	213	213	214	216	227	237	222
3 Duplex End	266	258	255	250	245	241	240	240	241	244	256	267	250
4 Single Family Other	295	287	285	279	275	271	271	271	271	274	286	296	280
5 Single Family Other	334	325	322	316	311	306	306	306	307	310	324	335	317
1 Duplex-ADA End	249	242	240	235	230	227	227	227	227	230	241	250	235

### MONTHLY ELECTRICAL COST

Unit Type	Jan	Feb	Mar	Apr	May	Jun	Jul	Aug	Sep	Oct	Nov	Dec	Avg.
2 Duplex End	\$48	\$47	\$47	\$46	\$46	\$45	\$45	\$45	\$45	\$45	\$47	\$49	\$46
3 Duplex End	\$53	\$52	\$51	\$51	\$50	\$49	\$49	\$49	\$49	\$50	\$51	\$53	\$51
4 Single Family Other	\$57	\$56	\$56	\$55	\$54	\$54	\$54	\$54	\$54	\$54	\$56	\$57	\$55
5 Single Family Other	\$63	\$62	\$61	\$60	\$60	\$59	\$59	\$59	\$59	\$60	\$62	\$63	\$61
1 Duplex-ADA End	\$50	\$49	\$49	\$48	\$48	\$47	\$47	\$47	\$47	\$48	\$49	\$51	\$48

### MONTHLY NATURAL GAS CONSUMPTION (Therms)

Unit Type	Jan	Feb	Mar	Apr	May	Jun	Jul	Aug	Sep	Oct	Nov	Dec	Avg.
2 Duplex End	46	36	33	26	21	16	15	15	16	20	35	47	27
3 Duplex End	57	44	40	32	24	18	18	18	18	23	42	58	33
4 Single Family Other	69	53	48	38	28	21	20	20	21	27	50	70	39
5 Single Family Other	79	60	55	43	32	23	22	22	23	31	58	81	44
1 Duplex-ADA End	34	24	21	14	8	3	3	3	4	7	22	35	15

### MONTHLY NATURAL GAS COST

Unit Type	Jan	Feb	Mar	Apr	May	Jun	Jul	Aug	Sep	Oct	Nov	Dec	Avg.
2 Duplex End	\$49	\$39	\$36	\$29	\$24	\$19	\$18	\$18	\$19	\$23	\$38	\$50	\$30
3 Duplex End	\$60	\$47	\$43	\$35	\$27	\$21	\$21	\$21	\$21	\$26	\$45	\$61	\$36
4 Single Family Other	\$75	\$56	\$51	\$41	\$31	\$24	\$23	\$23	\$24	\$30	\$53	\$76	\$42
5 Single Family Other	\$87	\$63	\$58	\$46	\$35	\$26	\$25	\$25	\$26	\$34	\$61	\$90	\$48
1 Duplex-ADA End	\$37	\$27	\$24	\$17	\$11	\$6	\$6	\$6	\$7	\$10	\$25	\$38	\$18

**CA 43-2A, Biggs**



### ANNUAL ELECTRICAL CONSUMPTION ITEMIZATION (kWh)

<u>Unit Type</u>	<u>Lights</u>	<u>Refrigerator</u>	<u>Fans/Heat</u>	<u>DHW</u>	<u>Cooking</u>	<u>Misc</u>	<u>Total</u>
2 Duplex End	1161	578	105			818	2662
3 Duplex End	1260	594	120			1028	3002
4 Duplex End	1376	600	111			1273	3360
1 Duplex-ADA End	512	567	105		933	707	3360

### ANNUAL NATURAL GAS CONSUMPTION ITEMIZATION (Therms)

<u>Unit Type</u>	<u>Heat</u>	<u>DHW</u>	<u>Cooking</u>	<u>Other</u>	<u>Total</u>
2 Duplex End	142	152	33	0	327
3 Duplex End	180	174	36	0	390
4 Duplex End	222	204	40	0	466
1 Duplex-ADA End	142	35			177

### MONTHLY ELECTRICAL CONSUMPTION (kWh)

Unit Type	Jan	Feb	Mar	Apr	May	Jun	Jul	Aug	Sep	Oct	Nov	Dec	Avg.
2 Duplex End	236	228	226	221	217	213	213	213	214	216	227	237	222
3 Duplex End	266	258	255	250	245	241	240	240	241	244	256	267	250
4 Duplex End	295	287	285	279	275	271	271	271	271	274	286	296	280
1 Duplex-ADA End	249	242	240	235	230	227	227	227	227	230	241	250	235

### MONTHLY ELECTRICAL COST

Unit Type	Jan	Feb	Mar	Apr	May	Jun	Jul	Aug	Sep	Oct	Nov	Dec	Avg.
2 Duplex End	\$45	\$44	\$43	\$43	\$42	\$41	\$41	\$41	\$42	\$42	\$44	\$45	\$43
3 Duplex End	\$50	\$49	\$48	\$47	\$47	\$46	\$46	\$46	\$46	\$46	\$48	\$50	\$47
4 Duplex End	\$55	\$53	\$53	\$52	\$51	\$51	\$51	\$51	\$51	\$51	\$53	\$55	\$52
1 Duplex-ADA End	\$47	\$46	\$46	\$45	\$44	\$44	\$44	\$44	\$44	\$44	\$46	\$47	\$45

### MONTHLY NATURAL GAS CONSUMPTION (Therms)

Unit Type	Jan	Feb	Mar	Apr	May	Jun	Jul	Aug	Sep	Oct	Nov	Dec	Avg.
2 Duplex End	46	36	33	26	21	16	15	15	16	20	35	47	27
3 Duplex End	57	44	40	32	24	18	18	18	18	23	42	58	33
4 Duplex End	69	53	48	38	28	21	20	20	21	27	50	70	39
1 Duplex-ADA End	34	24	21	14	8	3	3	3	4	7	22	35	15

### MONTHLY NATURAL GAS COST

Unit Type	Jan	Feb	Mar	Apr	May	Jun	Jul	Aug	Sep	Oct	Nov	Dec	Avg.
2 Duplex End	\$49	\$39	\$36	\$29	\$24	\$19	\$18	\$18	\$19	\$23	\$38	\$50	\$30
3 Duplex End	\$60	\$47	\$43	\$35	\$27	\$21	\$21	\$21	\$21	\$26	\$45	\$61	\$36
4 Duplex End	\$75	\$56	\$51	\$41	\$31	\$24	\$23	\$23	\$24	\$30	\$53	\$76	\$42
1 Duplex-ADA End	\$37	\$27	\$24	\$17	\$11	\$6	\$6	\$6	\$7	\$10	\$25	\$38	\$18

**CA 43-2B, Biggs**

### ANNUAL ELECTRICAL CONSUMPTION ITEMIZATION (kWh)

<u>Unit Type</u>	<u>Lights</u>	<u>Refrigerator</u>	<u>Fans/Heat</u>	<u>DHW</u>	<u>Cooking</u>	<u>Misc</u>	<u>Total</u>
2 Duplex End	1161	578	105			818	2662
3 Duplex End	1260	594	120			1028	3002

### ANNUAL NATURAL GAS CONSUMPTION ITEMIZATION (Therms)

<u>Unit Type</u>	<u>Heat</u>	<u>DHW</u>	<u>Cooking</u>	<u>Other</u>	<u>Total</u>
2 Duplex End	142	152	33	0	327
3 Duplex End	180	174	36	0	390

### MONTHLY ELECTRICAL CONSUMPTION (kWh)

Unit Type	Jan	Feb	Mar	Apr	May	Jun	Jul	Aug	Sep	Oct	Nov	Dec	Avg.
2 Duplex End	236	228	226	221	217	213	213	213	214	216	227	237	222
3 Duplex End	266	258	255	250	245	241	240	240	241	244	256	267	250

### MONTHLY ELECTRICAL COST

Unit Type	Jan	Feb	Mar	Apr	May	Jun	Jul	Aug	Sep	Oct	Nov	Dec	Avg.
2 Duplex End	\$45	\$44	\$43	\$43	\$42	\$41	\$41	\$41	\$42	\$42	\$44	\$45	\$43
3 Duplex End	\$50	\$49	\$48	\$47	\$47	\$46	\$46	\$46	\$46	\$46	\$48	\$50	\$47

### MONTHLY NATURAL GAS CONSUMPTION (Therms)

Unit Type	Jan	Feb	Mar	Apr	May	Jun	Jul	Aug	Sep	Oct	Nov	Dec	Avg.
2 Duplex End	46	36	33	26	21	16	15	15	16	20	35	47	27
3 Duplex End	57	44	40	32	24	18	18	18	18	23	42	58	33

### MONTHLY NATURAL GAS COST

Unit Type	Jan	Feb	Mar	Apr	May	Jun	Jul	Aug	Sep	Oct	Nov	Dec	Avg.
2 Duplex End	\$49	\$39	\$36	\$29	\$24	\$19	\$18	\$18	\$19	\$23	\$38	\$50	\$30
3 Duplex End	\$60	\$47	\$43	\$35	\$27	\$21	\$21	\$21	\$21	\$26	\$45	\$61	\$36

**CA 43-3, Chico**



**ANNUAL ELECTRICAL CONSUMPTION ITEMIZATION (kWh)**

<u>Unit Type</u>	<u>Lights</u>	<u>Refrigerator</u>	<u>Fans/Heat</u>	<u>DHW</u>	<u>Cooking</u>	<u>Misc</u>	<u>Total</u>
1 Duplex End	1074	567	70			707	2418
2 Duplex End	1161	578	83			818	2640
3 Duplex End	1260	594	105			1028	2987
4 Single Family Other	1376	600	130			1273	3379
1 Duplex-ADA End	512	567	83		933	707	2802
2 Duplex-ADA End	742	578	105		1067	818	3310
3 Single Family-ADA Other	763	594	130		1200	1028	3715

**ANNUAL NATURAL GAS CONSUMPTION ITEMIZATION (Therms)**

<u>Unit Type</u>	<u>Heat</u>	<u>DHW</u>	<u>Cooking</u>	<u>Other</u>	<u>Total</u>
1 Duplex End	112	115	30	0	257
2 Duplex End	133	152	33	0	318
3 Duplex End	169	174	36	0	379
4 Single Family Other	208	204	40	0	452
1 Duplex-ADA End	133	35			168
2 Duplex-ADA End	169	46			215
3 Single Family-ADA Other	208	52			260

### MONTHLY ELECTRICAL CONSUMPTION (kWh)

Unit Type	Jan	Feb	Mar	Apr	May	Jun	Jul	Aug	Sep	Oct	Nov	Dec	Avg.
1 Duplex End	211	206	204	201	198	196	196	196	196	198	205	211	202
2 Duplex End	231	225	224	220	216	213	213	213	213	216	224	232	220
3 Duplex End	263	255	253	248	244	241	240	240	241	243	254	264	249
4 Single Family Other	299	290	287	281	275	271	271	271	271	275	288	300	282
1 Duplex-ADA End	245	239	237	233	230	227	227	227	227	229	238	245	234
2 Duplex-ADA End	290	282	280	275	271	267	267	267	268	270	281	291	276
3 Single Family-ADA Other	327	318	315	309	303	299	299	299	299	303	316	328	310

### MONTHLY ELECTRICAL COST

Unit Type	Jan	Feb	Mar	Apr	May	Jun	Jul	Aug	Sep	Oct	Nov	Dec	Avg.
1 Duplex End	\$23	\$23	\$22	\$22	\$22	\$22	\$22	\$22	\$22	\$22	\$22	\$23	\$22
2 Duplex End	\$25	\$24	\$24	\$24	\$23	\$23	\$23	\$23	\$23	\$23	\$24	\$25	\$24
3 Duplex End	\$28	\$27	\$27	\$26	\$26	\$26	\$26	\$26	\$26	\$26	\$27	\$28	\$26
4 Single Family Other	\$31	\$30	\$30	\$29	\$29	\$28	\$28	\$28	\$28	\$29	\$30	\$31	\$29
1 Duplex-ADA End	\$26	\$26	\$25	\$25	\$25	\$24	\$24	\$24	\$24	\$25	\$25	\$26	\$25
2 Duplex-ADA End	\$30	\$29	\$29	\$29	\$28	\$28	\$28	\$28	\$28	\$28	\$29	\$30	\$29
3 Single Family-ADA Other	\$34	\$33	\$32	\$32	\$31	\$31	\$31	\$31	\$31	\$31	\$33	\$34	\$32

### MONTHLY NATURAL GAS CONSUMPTION (Therms)

Unit Type	Jan	Feb	Mar	Apr	May	Jun	Jul	Aug	Sep	Oct	Nov	Dec	Avg.
1 Duplex End	36	28	26	21	16	13	12	12	13	16	27	37	21
2 Duplex End	44	35	32	26	20	16	15	15	16	20	33	45	26
3 Duplex End	54	42	39	31	24	18	18	18	18	23	40	55	32
4 Single Family Other	66	51	46	37	28	21	20	20	21	27	48	67	38
1 Duplex-ADA End	32	22	20	13	8	3	3	3	3	7	21	33	14
2 Duplex-ADA End	41	28	25	17	10	4	4	4	5	9	27	42	18
3 Single Family-ADA Other	50	35	30	21	12	5	4	4	5	11	32	51	22

### MONTHLY NATURAL GAS COST

Unit Type	Jan	Feb	Mar	Apr	May	Jun	Jul	Aug	Sep	Oct	Nov	Dec	Avg.
1 Duplex End	\$39	\$31	\$29	\$24	\$19	\$16	\$15	\$15	\$16	\$19	\$30	\$40	\$25
2 Duplex End	\$47	\$38	\$35	\$29	\$23	\$19	\$18	\$18	\$19	\$23	\$36	\$48	\$30
3 Duplex End	\$57	\$45	\$42	\$34	\$27	\$21	\$21	\$21	\$21	\$26	\$43	\$58	\$35
4 Single Family Other	\$71	\$54	\$49	\$40	\$31	\$24	\$23	\$23	\$24	\$30	\$51	\$72	\$41
1 Duplex-ADA End	\$35	\$25	\$23	\$16	\$11	\$6	\$6	\$6	\$6	\$10	\$24	\$36	\$17
2 Duplex-ADA End	\$44	\$31	\$28	\$20	\$13	\$7	\$7	\$7	\$8	\$12	\$30	\$45	\$21
3 Single Family-ADA Other	\$53	\$38	\$33	\$24	\$15	\$8	\$7	\$7	\$8	\$14	\$35	\$54	\$25

**CA 43-4, Gridley**

### ANNUAL ELECTRICAL CONSUMPTION ITEMIZATION (kWh)

<u>Unit Type</u>	<u>Lights</u>	<u>Refrigerator</u>	<u>Fans/Heat</u>	<u>DHW</u>	<u>Cooking</u>	<u>Misc</u>	<u>Total</u>
1 Duplex End	1074	567	88			707	2436
2 Duplex End	1161	578	105			818	2662
3 Single Family Other	1260	594	120			1028	3002
4 Single Family Other	1376	600	111			1273	3360

### ANNUAL NATURAL GAS CONSUMPTION ITEMIZATION (Therms)

<u>Unit Type</u>	<u>Heat</u>	<u>DHW</u>	<u>Cooking</u>	<u>Other</u>	<u>Total</u>
1 Duplex End	119	115	30	0	264
2 Duplex End	142	152	33	0	327
3 Single Family Other	180	174	36	0	390
4 Single Family Other	222	204	40	0	466

### MONTHLY ELECTRICAL CONSUMPTION (kWh)

Unit Type	Jan	Feb	Mar	Apr	May	Jun	Jul	Aug	Sep	Oct	Nov	Dec	Avg.
1 Duplex End	215	208	207	203	199	196	196	196	196	198	208	215	203
2 Duplex End	236	228	226	221	217	213	213	213	214	216	227	237	222
3 Single Family Other	266	258	255	250	245	241	240	240	241	244	256	267	250
4 Single Family Other	295	287	285	279	275	271	271	271	271	274	286	296	280

### MONTHLY ELECTRICAL COST

Unit Type	Jan	Feb	Mar	Apr	May	Jun	Jul	Aug	Sep	Oct	Nov	Dec	Avg.
1 Duplex End	\$45	\$44	\$44	\$44	\$43	\$42	\$42	\$42	\$42	\$43	\$44	\$45	\$44
2 Duplex End	\$48	\$47	\$47	\$46	\$46	\$45	\$45	\$45	\$45	\$45	\$47	\$49	\$46
3 Single Family Other	\$53	\$52	\$51	\$51	\$50	\$49	\$49	\$49	\$49	\$50	\$51	\$53	\$51
4 Single Family Other	\$57	\$56	\$56	\$55	\$54	\$54	\$54	\$54	\$54	\$54	\$56	\$57	\$55

### MONTHLY NATURAL GAS CONSUMPTION (Therms)

Unit Type	Jan	Feb	Mar	Apr	May	Jun	Jul	Aug	Sep	Oct	Nov	Dec	Avg.
1 Duplex End	38	29	27	21	16	13	12	12	13	16	28	39	22
2 Duplex End	46	36	33	26	21	16	15	15	16	20	35	47	27
3 Single Family Other	57	44	40	32	24	18	18	18	18	23	42	58	33
4 Single Family Other	69	53	48	38	28	21	20	20	21	27	50	70	39

### MONTHLY NATURAL GAS COST

Unit Type	Jan	Feb	Mar	Apr	May	Jun	Jul	Aug	Sep	Oct	Nov	Dec	Avg.
1 Duplex End	\$41	\$32	\$30	\$24	\$19	\$16	\$15	\$15	\$16	\$19	\$31	\$42	\$25
2 Duplex End	\$49	\$39	\$36	\$29	\$24	\$19	\$18	\$18	\$19	\$23	\$38	\$50	\$30
3 Single Family Other	\$60	\$47	\$43	\$35	\$27	\$21	\$21	\$21	\$21	\$26	\$45	\$61	\$36
4 Single Family Other	\$75	\$56	\$51	\$41	\$31	\$24	\$23	\$23	\$24	\$30	\$53	\$76	\$42

**CA 43-10, Winston Gardens**



### ANNUAL ELECTRICAL CONSUMPTION ITEMIZATION (kWh)

<u>Unit Type</u>	<u>Lights</u>	<u>Refrigerator</u>	<u>Fans/Heat</u>	<u>DHW</u>	<u>Cooking</u>	<u>Misc</u>	<u>Total</u>
1 Duplex End	1197	567	3047			707	5518
2 Duplex End	1241	578	3890			818	6527

### ANNUAL NATURAL GAS CONSUMPTION ITEMIZATION (Therms)

<u>Unit Type</u>	<u>Heat</u>	<u>DHW</u>	<u>Cooking</u>	<u>Other</u>	<u>Total</u>
1 Duplex End		115	30	0	145
2 Duplex End		152	33	0	185

**MONTHLY ELECTRICAL CONSUMPTION (kWh)**

Unit Type	Jan	Feb	Mar	Apr	May	Jun	Jul	Aug	Sep	Oct	Nov	Dec	Avg.
1 Duplex End	869	648	589	444	317	217	206	206	218	302	616	886	460
2 Duplex End	1066	784	709	523	361	234	220	220	236	342	744	1088	544

**MONTHLY ELECTRICAL COST**

Unit Type	Jan	Feb	Mar	Apr	May	Jun	Jul	Aug	Sep	Oct	Nov	Dec	Avg.
1 Duplex End	\$83	\$63	\$57	\$44	\$33	\$24	\$23	\$23	\$24	\$31	\$60	\$84	\$46
2 Duplex End	\$103	\$75	\$68	\$51	\$37	\$25	\$24	\$24	\$25	\$35	\$72	\$105	\$54

**MONTHLY NATURAL GAS CONSUMPTION (Therms)**

Unit Type	Jan	Feb	Mar	Apr	May	Jun	Jul	Aug	Sep	Oct	Nov	Dec	Avg.
1 Duplex End	12	12	12	12	12	12	12	12	12	12	12	12	12
2 Duplex End	15	15	15	15	15	15	15	15	15	15	15	15	15

**MONTHLY NATURAL GAS COST**

Unit Type	Jan	Feb	Mar	Apr	May	Jun	Jul	Aug	Sep	Oct	Nov	Dec	Avg.
1 Duplex End	\$15	\$15	\$15	\$15	\$15	\$15	\$15	\$15	\$15	\$15	\$15	\$15	\$15
2 Duplex End	\$18	\$18	\$18	\$18	\$18	\$18	\$18	\$18	\$18	\$18	\$18	\$18	\$18

**CA 43-13, Rhodes Terrace and Shelton Oaks**

**ANNUAL ELECTRICAL CONSUMPTION ITEMIZATION (kWh)**

<u>Unit Type</u>	<u>Lights</u>	<u>Refrigerator</u>	<u>Fans/Heat</u>	<u>DHW</u>	<u>Cooking</u>	<u>Misc</u>	<u>Total</u>
2 Duplex End	983	578	125			818	2504
3 Duplex End	1180	594	155			1028	2957

**ANNUAL NATURAL GAS CONSUMPTION ITEMIZATION (Therms)**

<u>Unit Type</u>	<u>Heat</u>	<u>DHW</u>	<u>Cooking</u>	<u>Other</u>	<u>Total</u>
2 Duplex End	95	152	33	0	280
3 Duplex End	116	174	36	0	326

### MONTHLY ELECTRICAL CONSUMPTION (kWh)

Unit Type	Jan	Feb	Mar	Apr	May	Jun	Jul	Aug	Sep	Oct	Nov	Dec	Avg.
2 Duplex End	225	216	214	208	203	199	198	198	199	202	215	226	209
3 Duplex End	267	256	253	246	239	234	234	234	234	238	254	268	246

### MONTHLY ELECTRICAL COST

Unit Type	Jan	Feb	Mar	Apr	May	Jun	Jul	Aug	Sep	Oct	Nov	Dec	Avg.
2 Duplex End	\$24	\$23	\$23	\$23	\$22	\$22	\$22	\$22	\$22	\$22	\$23	\$24	\$23
3 Duplex End	\$28	\$27	\$27	\$26	\$26	\$25	\$25	\$25	\$25	\$25	\$27	\$28	\$26

**MONTHLY NATURAL GAS CONSUMPTION (Therms)**

Unit Type	Jan	Feb	Mar	Apr	May	Jun	Jul	Aug	Sep	Oct	Nov	Dec	Avg.
2 Duplex End	36	29	27	23	19	16	15	15	16	18	28	37	23
3 Duplex End	43	34	32	27	22	18	18	18	18	21	33	43	27

**MONTHLY NATURAL GAS COST**

Unit Type	Jan	Feb	Mar	Apr	May	Jun	Jul	Aug	Sep	Oct	Nov	Dec	Avg.
2 Duplex End	\$39	\$32	\$30	\$26	\$22	\$19	\$18	\$18	\$19	\$21	\$31	\$40	\$26
3 Duplex End	\$46	\$37	\$35	\$30	\$25	\$21	\$21	\$21	\$21	\$24	\$36	\$46	\$30

**CA 43-14, Oroville**



### ANNUAL ELECTRICAL CONSUMPTION ITEMIZATION (kWh)

<u>Unit Type</u>	<u>Lights</u>	<u>Refrigerator</u>	<u>Fans/Heat</u>	<u>DHW</u>	<u>Cooking</u>	<u>Misc</u>	<u>Total</u>
3 Duplex End	983	594	197			1028	2802

### ANNUAL NATURAL GAS CONSUMPTION ITEMIZATION (Therms)

<u>Unit Type</u>	<u>Heat</u>	<u>DHW</u>	<u>Cooking</u>	<u>Other</u>	<u>Total</u>
3 Duplex End	147	174	36	0	357

### MONTHLY ELECTRICAL CONSUMPTION (kWh)

Unit Type	Jan	Feb	Mar	Apr	May	Jun	Jul	Aug	Sep	Oct	Nov	Dec	Avg.
3 Duplex End	260	246	242	232	224	218	217	217	218	223	244	261	234

### MONTHLY ELECTRICAL COST

Unit Type	Jan	Feb	Mar	Apr	May	Jun	Jul	Aug	Sep	Oct	Nov	Dec	Avg.
3 Duplex End	\$27	\$26	\$26	\$25	\$24	\$24	\$24	\$24	\$24	\$24	\$26	\$28	\$25

### MONTHLY NATURAL GAS CONSUMPTION (Therms)

Unit Type	Jan	Feb	Mar	Apr	May	Jun	Jul	Aug	Sep	Oct	Nov	Dec	Avg.
3 Duplex End	49	39	36	29	23	18	18	18	18	22	37	50	30

### MONTHLY NATURAL GAS COST

Unit Type	Jan	Feb	Mar	Apr	May	Jun	Jul	Aug	Sep	Oct	Nov	Dec	Avg.
3 Duplex End	\$52	\$42	\$39	\$32	\$26	\$21	\$21	\$21	\$21	\$25	\$40	\$53	\$33

**CA 43-15, Oroville**

### ANNUAL ELECTRICAL CONSUMPTION ITEMIZATION (kWh)

<u>Unit Type</u>	<u>Lights</u>	<u>Refrigerator</u>	<u>Fans/Heat</u>	<u>DHW</u>	<u>Cooking</u>	<u>Misc</u>	<u>Total</u>
3 Single Family Other	1471	594	119			1028	3212

### ANNUAL NATURAL GAS CONSUMPTION ITEMIZATION (Therms)

<u>Unit Type</u>	<u>Heat</u>	<u>DHW</u>	<u>Cooking</u>	<u>Other</u>	<u>Total</u>
3 Single Family Other	119	181	36	0	336

### MONTHLY ELECTRICAL CONSUMPTION (kWh)

Unit Type	Jan	Feb	Mar	Apr	May	Jun	Jul	Aug	Sep	Oct	Nov	Dec	Avg.
3 Single Family Other	284	275	273	267	262	258	258	258	258	261	274	284	268

### MONTHLY ELECTRICAL COST

Unit Type	Jan	Feb	Mar	Apr	May	Jun	Jul	Aug	Sep	Oct	Nov	Dec	Avg.
3 Single Family Other	\$30	\$29	\$29	\$28	\$28	\$27	\$27	\$27	\$27	\$28	\$29	\$30	\$28

### MONTHLY NATURAL GAS CONSUMPTION (Therms)

Unit Type	Jan	Feb	Mar	Apr	May	Jun	Jul	Aug	Sep	Oct	Nov	Dec	Avg.
3 Single Family Other	44	35	33	27	22	19	18	18	19	22	34	45	28

### MONTHLY NATURAL GAS COST

Unit Type	Jan	Feb	Mar	Apr	May	Jun	Jul	Aug	Sep	Oct	Nov	Dec	Avg.
3 Single Family Other	\$47	\$38	\$36	\$30	\$25	\$22	\$21	\$21	\$22	\$25	\$37	\$48	\$31

## **Water/Sewer Tables**



### **Water/Sewer Tables**

The Housing Authority of the County of Butte is in the process of installing individual water meters on each apartment. When this is completed, the following tables may be used to establish a water/sewer allowance for those metered units.

A water/sewer allowance should **ONLY** be applied if the unit is individually metered and the resident has a means of controlling consumption (an off/on switch, thermostat, etc.).

### Gross Water Consumption:

Type	Occ	Toil	Shwr	Dish	Clths	Cook	Hand	Gal/Day	Gal/Yr	Gal/Mo.
0 Bedroom	1.0	18	20	1.5	8	0.2	0.1	47	17228	1436
1 Bedroom	1.1	19	22	1.7	9	0.2	0.1	52	18951	1579
2 Bedroom	2.5	44	50	3.8	20	0.4	0.1	118	43070	3589
3 Bedroom	3.5	61	70	5.3	28	0.5	0.2	165	60298	5025
4 Bedroom	5.0	88	100	7.5	40	0.8	0.3	236	86140	7178
5 Bedroom	6.0	105	120	9.0	48	0.9	0.3	283	103368	8614
6 Bedroom	8.0	140	160	12.0	64	1.2	0.4	378	137824	11485

#### Gal Each % Hot Water

Toilet Flush:	3.5	0%	5	Flushes per person per day
Shower:	20	50%	1	Showers per person per day
Dishload:	3	25%	0.5	Dishloads per person per day
Laundry load:	40	50%	0.2	Clothesloads per person per day
Meal:	0.05	0%	3	Meals per person per day
Handwashing:	0.05	50%	10	Handwashings per person per day

### Water & Sewer Tables

Bedroom Size	Consumption per Month (Gallons)	Allowance per Month
0	1435.7	\$68.42
1	1579.2	\$68.56
2	3589.2	\$70.51
3	5024.8	\$71.90
4	7178.3	\$73.99
5	8614	\$75.39

#### Water & Sewage Rate Schedule

Base Charge:	67.03
Energy Charge:	
First	2,000 Gallons \$0.00097
12000 Next	10,000 Gallons \$0.00097
22000 Next	10,000 Gallons \$0.00097
30000 Next	10,000 Gallons \$0.00097
Cost Adjustment:	0
Tax:	0%

### Gross Water Consumption:

Type	Occ	Toil	Shwr	Dish	Clths	Cook	Hand	Gal/Day	Gal/Yr	Gal/Mo.
0 Bedroom	1.0	18	20	1.5	8	0.2	0.1	47	17228	1436
1 Bedroom	1.1	19	22	1.7	9	0.2	0.1	52	18951	1579
2 Bedroom	2.5	44	50	3.8	20	0.4	0.1	118	43070	3589
3 Bedroom	3.5	61	70	5.3	28	0.5	0.2	165	60298	5025
4 Bedroom	5.0	88	100	7.5	40	0.8	0.3	236	86140	7178
5 Bedroom	6.0	105	120	9.0	48	0.9	0.3	283	103368	8614
6 Bedroom	8.0	140	160	12.0	64	1.2	0.4	378	137824	11485

#### Gal Each % Hot Water

Toilet Flush:	3.5	0%	5	Flushes per person per day
Shower:	20	50%	1	Showers per person per day
Dishload:	3	25%	0.5	Dishloads per person per day
Laundry load:	40	50%	0.2	Clothesloads per person per day
Meal:	0.05	0%	3	Meals per person per day
Handwashing:	0.05	50%	10	Handwashings per person per day

### Water & Sewer Tables

Bedroom Size	Consumption per Month (CCF)	Allowance per Month
0	1.9	\$119.30
1	2.1	\$119.30
2	4.8	\$119.30
3	6.7	\$119.30
4	9.6	\$119.30
5	11.5	\$119.30

#### Water & Sewage Rate Schedule

Base Charge:		119.3
Energy Charge:		
First	70 CCF	\$0.00000
10070 Next	10,000 CCF	\$0.82000
20070 Next	10,000 CCF	\$0.82000
30000 Next	10,000 CCF	\$0.82000
Cost Adjustment:		0
Tax:		0%

Water/Sewer rates in Biggs are for our apartments virtually flat-rated at \$114 per month for all units. This is due to the rate schedule which includes the first 70 CCF's with the flat water rate. This is more monthly consumption than a three bedroom or smaller unit would use in a YEAR. (See monthly, yearly consumption tables above. 1 CCF = 748 Gallons.)

### Gross Water Consumption:

Type	Occ	Toil	Shwr	Dish	Clths	Cook	Hand	Gal/Day	Gal/Yr	Gal/Mo.
0 Bedroom	1.0	18	20	1.5	8	0.2	0.1	47	17228	1436
1 Bedroom	1.1	19	22	1.7	9	0.2	0.1	52	18951	1579
2 Bedroom	2.5	44	50	3.8	20	0.4	0.1	118	43070	3589
3 Bedroom	3.5	61	70	5.3	28	0.5	0.2	165	60298	5025
4 Bedroom	5.0	88	100	7.5	40	0.8	0.3	236	86140	7178
5 Bedroom	6.0	105	120	9.0	48	0.9	0.3	283	103368	8614
6 Bedroom	8.0	140	160	12.0	64	1.2	0.4	378	137824	11485

#### Gal Eact % Hot Water

Toilet Flush:	3.5	0%	5	Flushes per person per day
Shower:	20	50%	1	Showers per person per day
Dishload:	3	25%	0.5	Dishloads per person per day
Laundry load:	40	50%	0.2	Clothesloads per person per day
Meal:	0.05	0%	3	Meals per person per day
Handwashing:	0.05	50%	10	Handwashings per person per day

### Water & Sewer Tables

Bedroom Size	Consumption per Month (CCF)	Allowance per Month
0	1.9	\$41.27
1	2.1	\$41.49
2	4.8	\$44.49
3	6.7	\$46.60
4	9.6	\$49.83
5	11.5	\$52.04

#### Water & Sewage Rate Schedule

Base Charge:		37.29
Energy Charge:		
First	10 CCF	\$1.05860
31 Next	21 CCF	\$1.12450
62 Next	31 CCF	\$1.19020
152 Next	100 CCF	\$1.19020
Cost Adjustment:		0
Tax:		5%

Butte County Housing Authority  
 WATER ONLY-- Sewer paid with tax bill to  
 County by HACB

Oroville, CA 43-10  
 Oroville, CA 43-14  
 Oroville, CA 43-15  
 Gardella Street  
 Oro Dam & Pomona Ave

### Gross Water Consumption:

Type	Occ	Toil	Shwr	Dish	Clths	Cook	Hand	Gal/Day	Gal/Yr	Gal/Mo.
0 Bedroom	1.0	18	20	1.5	8	0.2	0.1	47	17228	1436
1 Bedroom	1.1	19	22	1.7	9	0.2	0.1	52	18951	1579
2 Bedroom	2.5	44	50	3.8	20	0.4	0.1	118	43070	3589
3 Bedroom	3.5	61	70	5.3	28	0.5	0.2	165	60298	5025
4 Bedroom	5.0	88	100	7.5	40	0.8	0.3	236	86140	7178
5 Bedroom	6.0	105	120	9.0	48	0.9	0.3	283	103368	8614
6 Bedroom	8.0	140	160	12.0	64	1.2	0.4	378	137824	11485

#### Gal Each % Hot Water

Toilet Flush:	3.5	0%	5	Flushes per person per day
Shower:	20	50%	1	Showers per person per day
Dishload:	3	25%	0.5	Dishloads per person per day
Laundry load:	40	50%	0.2	Clothesloads per person per day
Meal:	0.05	0%	3	Meals per person per day
Handwashing:	0.05	50%	10	Handwashings per person per day

### Water & Sewer Tables

Bedroom Size	Consumption per Month (CCF)	Allowance per Month
0	1.9	\$35.13
1	2.1	\$35.51
2	4.8	\$40.70
3	6.7	\$44.35
4	9.6	\$50.12
5	11.5	\$54.01

#### Water & Sewage Rate Schedule

Base Charge:		31.48
Energy Charge:		
First	8 CCF	\$1.92120
148 Next	140 CCF	\$2.04510
368 Next	220 CCF	\$2.36390
460 Next	100 CCF	\$2.36390
Cost Adjustment:		0
Tax:		0%

### Gross Water Consumption:

Type	Occ	Toil	Shwr	Dish	Clths	Cook	Hand	Gal/Day	Gal/Yr	Gal/Mo.
0 Bedroom	1.0	18	20	1.5	8	0.2	0.1	47	17228	1436
1 Bedroom	1.1	19	22	1.7	9	0.2	0.1	52	18951	1579
2 Bedroom	2.5	44	50	3.8	20	0.4	0.1	118	43070	3589
3 Bedroom	3.5	61	70	5.3	28	0.5	0.2	165	60298	5025
4 Bedroom	5.0	88	100	7.5	40	0.8	0.3	236	86140	7178
5 Bedroom	6.0	105	120	9.0	48	0.9	0.3	283	103368	8614
6 Bedroom	8.0	140	160	12.0	64	1.2	0.4	378	137824	11485

Gal Each % Hot Water			
Toilet Flush:	3.5	0%	5 Flashes per person per day
Shower:	20	50%	1 Showers per person per day
Dishload:	3	25%	0.5 Dishloads per person per day
Laundry load:	40	50%	0.2 Clothesloads per person per day
Meal:	0.05	0%	3 Meals per person per day
Handwashing:	0.05	50%	10 Handwashings per person per day

### Water & Sewer Tables

Bedroom Size	Consumption per Month (CCF)	Allowance per Month
0	1.9	\$30.25
1	2.1	\$30.39
2	4.8	\$32.39
3	6.7	\$33.80
4	9.6	\$35.94
5	11.5	\$37.35

#### Water & Sewage Rate Schedule

Base Charge:		28.84
Energy Charge:		
First	8 CCF	\$0.74000
148 Next	140 CCF	\$0.74000
368 Next	220 CCF	\$0.74000
460 Next	100 CCF	\$0.74000
Cost Adjustment:		0
Tax:		0%

## **Current Utility Rate Schedules**

**Pacific Gas and Electric Company**  
**Residential Electric Rates**  
(Excluding Time-of-Use Rates)

Rates Effective:  
May 1, 2014, to Present

Rate Schedule	Rate Design	Minimum Energy Charge (per meter per day)	Discount (per dwelling unit per day)	Minimum Average Rate Limiter (per kWh per month)	Energy Charge <sup>1, 2/</sup> (\$/kWh)					California Climate Credit <sup>3/</sup>	"Average" Total Rate <sup>4/</sup> (per kWh)
					ES, ET, ESL & ETL Only	ES, ET, ESL & ETL Only	Tier 1 (Baseline) <sup>5/</sup>	Tier 2 (101-130% of baseline)	Tier 3 (131-200% of baseline)		
<b>Residential Schedules: E-1, EM, ES, ESR, ET</b>	Tiered Energy Charges	\$0.14784	ES = (\$0.02300) ET = \$0.07721	ES and ET \$0.04892	\$0.13627	\$0.15491	\$0.31955	\$0.35955	\$0.35955	(\$29.82)	\$0.19133
<b>Residential CARE Schedules: EL-1, EML, ESL, ESRL, ETL</b>	CARE Tiered Energy Charges	\$0.11828	ESL = (\$0.02300) ETL = \$0.07721	ESL and ETL \$0.04892	\$0.08565	\$0.09850	\$0.13974	-	-	(\$29.82)	\$0.08928

Rate Schedule	Rate Design	Customer Charge (per meter per day)	Season	Energy Charge <sup>1, 2/</sup> (\$/kWh)					California Climate Credit <sup>3/</sup>	"Average" Total Rate <sup>4/</sup> (per kWh)
				Tier 1 (Baseline) <sup>5/</sup>	Tier 2 (101-130% of baseline)	Tier 3 (131-200% of baseline)	Tier 4 (201-300% of baseline)	Tier 5 (Over 300% of baseline)		
<b>Residential Seasonal Schedule E-8 <sup>6/</sup></b>	Seasonal Summer and Winter Energy Charges	\$0.41160	Summer	\$0.14078	\$0.14078	\$0.30542	\$0.34542	\$0.34542	(\$29.82)	\$0.22097
			Winter	\$0.09015	\$0.09015	\$0.25478	\$0.29478	\$0.29478		
<b>Residential Seasonal CARE Schedule EL-8 <sup>6/</sup></b>	CARE Seasonal Summer and Winter Energy Charges	\$0.32927	Summer	\$0.08883	\$0.08883	\$0.14436	-	-	(\$29.82)	\$0.09015
			Winter	\$0.05391	\$0.05391	\$0.09351	-	-		

<sup>1/</sup> Legislated 10% reduction on residential bills no longer applies above Tier 2, but is included directly in Tier 1 and Tier 2 rates, and minimum and customer charges.

<sup>2/</sup> Customers receiving a medical baseline allowance shall pay for all usage in excess of 130% of baseline at rates applicable to usage from 131 percent through 200 percent of baseline.

<sup>3/</sup> Bill credit per household, per semi-annual payment occurring in the April and October bill cycles.

<sup>4/</sup> Average rates based on estimated forecast. Average rates provided only for general reference, and individual customer's average rate will depend on it's applicable kWh, and TOU data.

<sup>5/</sup> For Baseline Territory and Quantity information, please view separate online worksheet or rate schedule in online Tariff Book.

<sup>6/</sup> Schedules E-8 and EL-8, are both closed to new customers.

Note: Summer Season: May-October Winter Season: November-April

This table provided for comparative purposes only. See current tariffs for full information regarding rates, application, eligibility and additional options.



# I - Core Gas Rates

## Residential Gas Rates

The residential gas rates below are effective June 1, 2014, through June 30, 2014.

	SCHEDULES G-1, GM, GS, GT		SCHEDULES GL-1, GML, GSL, GTL	
	BASELINE	EXCESS	BASELINE	EXCESS
Procurement Charge (per therm)	\$0.56813	\$0.56813	\$0.56813	\$0.56813
Transportation Charge (per therm)	\$0.53292	\$0.85268	\$0.53292	\$0.85268
CSI - Solar Thermal Exemption (per therm)	--	--	-\$0.00112	-\$0.00112
Care Discount (per therm)	n/a	n/a	-\$0.21999	-\$0.28394
<b>Total Residential Schedule Charge<sup>1/</sup></b>	<b>\$1.10105</b>	<b>\$1.42081</b>	<b>\$0.87994</b>	<b>\$1.13575</b>
Schedule G-PPPS (Public Purpose Program Surcharge) <sup>1/</sup> (per therm)	\$0.08387	\$0.08387	\$0.06075	\$0.06075
Minimum Transportation Charge (G-1 Only) <sup>2/</sup> (per day)	\$0.09863			
Discount (per day)				
GS & GSL only (per dwelling unit)	\$0.20900		\$0.20900	
GT & GTL only (per installed space)	\$0.48200		\$0.48200	

<sup>1/</sup>Schedule G-PPPS needs to be added to the Total Charge for bill calculation. See Schedule G-PPPS.

<sup>2/</sup>The Transportation Charge will be no less than the Minimum Transportation Charge. The Minimum Transportation Charge does not apply to submetered tenants of master-metered customers served under gas Rate Schedules GS and GT.

### Baseline Territories and Quantities (changed April 1, 2012)

WINTER (November 1 - March 31)					SUMMER (April 1 - October 31)				
TERRITORY	INDIVIDUALLY METERED		MASTER METERED (GM & GML only)		TERRITORY	INDIVIDUALLY METERED		MASTER METERED (GM & GML only)	
	Monthly	Daily	Monthly	Daily		Monthly	Daily	Monthly	Daily
P	66	2.18	32	1.06	P	14	0.46	10	0.33
Q	61	2.02	24	0.79	Q	20	0.65	18	0.59
R	55	1.82	38	1.26	R	13	0.43	11	0.36
S	58	1.92	20	0.66	S	14	0.46	10	0.33
T	54	1.79	34	1.12	T	20	0.65	18	0.59
V	54	1.79	37	1.22	V	21	0.69	17	0.56
W	51	1.69	27	0.89	W	14	0.46	9	0.29
X	61	2.02	24	0.79	X	18	0.59	11	0.36
Y	80	2.64	32	1.06	Y	25	0.82	15	0.49

To calculate bills use daily quantity (monthly provided for information purposes only).

**CITY OF GRIDLEY  
MASTER FEE SCHEDULE**

1	GENERAL	3
2	ADMINISTRATION	
3	(RESERVED)	
4	(RESERVED)	
5	BUSINESS TAXES, LICENSES, REGULATORY FEES	4
	Business license fees	5
	Business Improvement District	6
6	ANIMALS	7
7	(RESERVED)	
8	HEALTH AND SAFETY	9
	Garbage	9
	Fire Department Fees	13
9	PUBLIC PEACE, MORALS AND WELFARE	16
	Boat ramp / shooting range	17
	Police, non-vehicle related	17
10	VEHICLES AND TRAFFIC	18
	Bicycle	18
	Parking violations	19
11	(RESERVED)	
12	STREETS, SIDEWALKS AND PUBLIC PLACES	
13	PUBLIC SERVICES	20
	Sewer	20
	Water	22
	Electric	23
	Drainage	26
14	DEVELOPMENT IMPACT FEES	
15	BUILDINGS AND CONSTRUCTION	27
16	SUBDIVISIONS	33
17	ZONING	34

**TITLE 8. HEALTH AND SAFETY**

**A. GARBAGE COLLECTION** Ord 465(85); GMC 8.04.070; R2(99); 2000-R-066; 2001-R-037; 2002-R-001; 2002-R-007; 2002-R-073; 2003-R-048; 2004-R-063; 2005-R-047; 2006-R-030; 2007-R-042; 2014-R-5

Residential Rates

<b>Cart Size</b>	<b>Rates Effective 3/1/2014</b>
<b>Residential Cart</b>	
35 gallon - Senior	\$17.90
35 gallon	\$20.02
64 gallon	\$23.15
95 gallon	\$27.08
Add'l 35 gallon	\$20.02
Add'l 64 gallon	\$23.15
Add'l 90 gallon	\$27.08
<b>Extra Pickup Charges</b>	
35 gallon	\$8.21
64 gallon	\$9.44
95 gallon	\$9.44
Bag Pick Up	\$4.40

Commercial Rates

<b>Cart Size</b>	<b>Effective 3/1/2014</b>
35 gal.	\$26.85
64 gal.	\$37.82
96 gal.	\$65.42
Add'l 35 gallon	\$25.84
Add'l 64 gallon	\$37.82
Add'l 90 gallon	\$65.42

**TITLE 13. PUBLIC SERVICES**

**A. SEWER**

***Sewer System Capacity Fee (660-3641)***

Residential and Commercial Fee superseded by Development Impact Fees – Sewer – under Title 14  
Please see Title 14 for Development Impact Fees in lieu of Capacity Fees

O727-2004	13.08.010	Commercial	minimum fee	See Title 14	
			plus	\$ 17.78	F.U.
		Industrial		**	
		**Determined by City Engineer			

***Sewer System Collector Fee (650-3641)***

O727-2004	13.08.020	Single-family unit		\$1,650*	
		Mobile home		\$1,650*	
		Multiple unit (apartment - per unit)		\$1,650*	
		Commercial	minimum fee	\$1,650*	
			plus	\$ 17.78	F.U.
		Industrial		**	
		**Determined by City Engineer			

***Sewer System Lateral Fee (650-3641)***

O727-2004	13.08.030	4" and 6" service		\$1,725*	All dwelling unit, commercial, and industrial connections
-----------	-----------	-------------------	--	----------	---

***Sewer System Usage Charges (Res 2008-R-051; Ord 780-2008)***

Increases remain proportional to rate schedule established for Clean Water Grant by R72(78)

<u>User Classification</u>	<u>Charge</u>
Single family residential	\$ 37.96
Multi-family residential per unit	33.53
Hotels & Motels per unit	117.97
BCHA per unit	42.04
Retail & Commercial Service stations	46.67

O681(98)	13.06.050	Industrial wastewater permits	none
		Monitoring	none
		Violation response	none
		Appeals	none

**Other fees and service charges:**

Credit Report	\$7.50
On-site delivery of a termination notification	50.00
Field collection fee	50.00
Final termination notice	50.00
15-day delinquency notice: Residential	15.00
15-day delinquency notice: Commercial	15.00
Collection agency fee for delivery	15.00
Return check charge	25.00 plus
Return EFT charge (if applicable)	10.00

**B. WATER SYSTEM**

*Water System Usage Charges* (Res 2006-R-002 ; Ord 759-2006)

<u>Classification</u>	<u>Charge</u>
Usage fee - metered rate per 1,000 gallons	\$ 0.97
<u>Monthly meter fee</u>	
Up to 1" meters	\$ 24.99
1.5" meters	37.48
2" meters	49.97
3" meters	74.95
4" meters	99.93
Over 4" meters	124.92
Flat rate - without a dedicated meter	\$ 59.18
Bulk water - with building permit - up to 5 mos	114.89
Fire hydrant use - unmetered - hookup fee	24.99
Fire hydrant use - metered - deposit	976.60
Fire hydrant use - metered - rental per month	24.99
Fire hydrant use - usage per 1,000 gallons	0.97
Fire line for sprinklers	\$ -

**C. ELECTRIC SYSTEM**

**Electric Connection Fees**

<u>Type of premises: (Note 3)</u>	<u>Fee Criteria</u>	<u>Additional Information</u>	<u>Capacity 13.15.010</u>	<u>Distribution 13.15.015</u>	<u>Connection 13.15.020</u>
Single family residence	per unit	Note 1			
		Up to 200 Amp	\$ 900.00	\$ 900.00	\$ 900.00
		400 Amp	1,800.00	1,800.00	1,800.00
Multi-family residences	per unit	Note 1			
		Up to 200 Amp	\$ 900.00	\$ 900.00	\$ 900.00
		400 Amp	1,800.00	1,800.00	1,800.00
Commercial & Industrial	Note 2				

<u>Voltage</u>	<u>panel size</u>	<u>Single Phase</u>			<u>3 Phase</u>		
		<u>Capacity</u>	<u>Distribution</u>	<u>Connection</u>	<u>Capacity</u>	<u>Distribution</u>	<u>Connection</u>
120/240	200A or less	\$ 900.00	\$ 900.00	\$ 900.00	\$ 1,557.00	\$ 1,557.00	\$ 1,557.00
120/240	400	1,800.00	1,800.00	1,800.00	3,114.00	3,114.00	3,114.00
120/240	600	2,700.00	2,700.00	2,700.00	4,671.00	4,671.00	4,671.00
120/240	800	3,600.00	3,600.00	3,600.00	6,228.00	6,228.00	6,228.00
120/240	1000	4,500.00	4,500.00	4,500.00	7,785.00	7,785.00	7,785.00
120/208	200A or less				780.00	780.00	780.00
120/208	400				1,560.00	1,560.00	1,560.00
120/208	600				2,340.00	2,340.00	2,340.00
120/208	800				3,120.00	3,120.00	3,120.00
120/208	1000				3,900.00	3,900.00	3,900.00
277/480	200A or less				3,114.00	3,114.00	3,114.00
277/480	400				6,228.00	6,228.00	6,228.00
277/480	600				9,342.00	9,342.00	9,342.00
277/480	800				12,456.00	12,456.00	12,456.00
277/480	1000				15,570.00	15,570.00	15,570.00

2014-R-012

13.15.030

**Domestic (residential) rate:**

*(applies to ea. unit in any group - apt., duplex, etc.)*

Customer charge		Effective	06-01-14
Energy charge:	(Life line) to 475 KWh	\$ 11.30	min/month
	476 to 575 KWh	\$ 0.132	per KWh
	576 to 1800 KWh	\$ 0.18	per KWh
	1801 to 2000 KWh	\$ 0.24	per KWh
	2001 KWh and over	\$ 0.26	per KWh
Public Benefit Charge		\$ 0.277	per KWh
California Energy Commission	up to	2.85%	of charges per KWh
		\$+ 0.0003	of charges per KWh

**Life Support Program (residential) rate:**

Customer charge		Effective	06-01-14
Energy charge	(Life line) to 475 KWh	\$ 9.00	min/month
	476 to 575 KWh	\$ 0.12	per KWh
	576 to 1425 KWh	\$ 0.16	per KWh
	1426 KWh and over	\$ 0.22	per KWh
Public Benefit Charge		\$ 0.25	per KWh
California Energy Commission	up to	2.85%	of charges per KWh
		\$+ 0.0003	of charges per KWh

2014-R-012

13.15.030

**General (commercial) rate:**

**No demand meter:**

Customer charge		Effective	06-01-14
Energy charge	to 625 KWh	\$ 22.10	min/month
	626 to 2500 KWh	\$ 0.14	per KWh
	2501 to 2675 KWh	\$ 0.17	per KWh
	2676 to 7500 KWh	\$ 0.175	per KWh
	7501 to 10000 KWh	\$ 0.18	per KWh
	10000 KWh and over	\$ 0.19	per KWh
Public Benefit Charge		\$ 0.23	of charges per KWh
California Energy Commission	up to	2.85%	of charges per KWh
		\$+ 0.0003	

*Single phase meter-all usages  
3-phase - less than 25,000 KWH annual usage*

Requirements:

**Demand (commercial) meter rate:**

Customer charge		Effective	06-01-14
Energy charge	to 7,000 KWh	\$ 49.61	min/month
	7001-10000 KWh	\$ 0.18	per KWh
	10000+	\$ 0.19	per KWh
		\$ 0.15	of charges per KWh
Public Benefit Charge		2.85%	of charges per KWh
California Energy Commission	up to	\$+ 0.0003	

*3-Phase meter/more than 25,000 KWH annual usage*

Requirements:

2014-R-012

13.15.030

**Industrial rates:**

Customer charge		Effective	06-01-14
Energy charge		\$ 150.00	min/month
Public Benefit Charge		\$ 0.115	per KWh
California Energy Commission	up to	\$ 5.25	per KW
		2.85%	of charges per KWh
		\$+ 0.0003	per KWh

*3-Phase meter - more than 25,000 kWh annual usage; and Average monthly demand greater than 500 KW over the past 12 months actual (or estimated for new accounts).*

Requirements:

2014-R-012

13.15.030

**Domestic (residential) rate:**

*(applies to ea. unit in any group - apt.,*

Effective 01-01-2015  
duplex, etc.)

Customer charge		\$ 12.00	min/month
Energy charge:	(Life line) to 475 KWh	\$ 0.137	per KWh
	476 to 575 KWh	\$ 0.190	per KWh
	576 to 1800 KWh	\$ 0.25	per KWh
	1801 to 2000 KWh	\$ 0.270	per KWh
	2001 KWh and over	\$ 0.293	per KWh
Public Benefit Charge		2.85%	per KWh
California Energy Commission	up to	\$+ 0.0003	of charges per KWh



**Life Support Program (residential) rate:**

Customer charge		\$ 9.00	min/month
Energy charge	(Life line) to 475 KWh	\$ 0.12	per KWh
	476 to 575 KWh	\$ 0.16	per KWh
	576 to 1425 KWh	\$ 0.22	per KWh
	1426 KWh and over	\$ 0.25	per KWh
Public Benefit Charge		\$+ 0.0003	of charges per KWh
California Energy Commission	up to		
	<i>(must meet eligibility requirements)</i>		

2014-R-012

13.15.030

**General (commercial) rate:**

**No demand meter:**

Customer charge		\$ 23.43	min/month
Energy charge	to 625 KWh	\$ 0.15	per KWh
	626 to 2500 KWh	\$ 0.18	per KWh
	2501 to 2675 KWh	\$ 0.184	per KWh
	2676 to 7500 KWh	\$ 0.19	per KWh
	7501 to 10000 KWh	\$ 0.20	per KWh
	10000 KWh and over	\$ 0.24	per KWh
Demand charge	per KW over 30KW	\$ 7.50	
Public Benefit Charge		2.85%	of charges per KWh
California Energy Commission	up to	\$+ 0.0003	
	<i>Single phase meter-all usages</i>		
	<i>3-phase - less than 25,000 KWH annual usage</i>		

Requirements:

**Demand (commercial) meter rate:**

Customer charge		Effective \$ 46.80	01-01-2015 min/month
Energy charge	0-7000 KWh	\$ 0.174	per KWh
	7001-10000 KWh	\$ 0.140	per KWh
	10000+	\$ 0.16	per KWh
Demand charge	per KW over 30KW	7.50	
Public Benefit Charge		2.85%	of charges per KWh
California Energy Commission	up to	\$+ 0.0003	
	<i>3-Phase meter/more than 25,000 KWH annual usage</i>		

Requirements:

2014-R-012

13.15.030

**Industrial rates:**

Customer charge		Effective \$ 150.00	12-01-09 min/month
Energy charge		\$ 0.115	per KWh
Public Benefit Charge		\$ 5.25	per KW
California Energy Commission	up to	2.85%	of charges per KWh
	<i>3-Phase meter - more than 25,000 kWh annual usage; and Average monthly demand greater than 500 KW over the past 12 months actual (or estimated for new accounts).</i>	\$+ 0.0003	

Requirements:



**CITY OF BIGGS – FEE SCHEDULES**

**WATER SERVICE RATES**

**AUTHORITY:** Ordinance No. 347; Ordinance No. 366

**EFFECTIVE DATE:** June 16, 2011

**COROLLARY REFERENCE:** Section 5471 California Health and Safety Code; Section 10.10.045 Biggs Municipal Code

A. Pursuant to the authority granted to it by state law, the City of Biggs hereby establishes the following monthly water rates.

**Metered Rates:**

<b>Pipe Size</b>	<b>Min Service Charge</b>	<b>Min Usage (C.F.)</b>	<b>Rate/1000 CF</b>
3/4"	41.85	7000	\$8.20
1"	41.85	7000	\$8.20
1.5"	46.57	7000	\$8.20
2"	54.57	7000	\$8.20
3"	105.14	9032	\$6.20
4"	145.14	15,510	\$6.20
6"	253.14	32,984	\$6.20

**Flat Rates:**

<b>Type</b>	<b>Flat Rate</b>
Residential - Single Family	\$41.85
Residential - Multi Family	\$41.85
Churches/Lodges	\$52.85
Business/Retail	\$71.85
Restaurants/Bars	\$81.85
Service Stations	\$182.85
Day Care Centers & Pre School Facilities Up to 10 Children	\$52.85
Day Care Centers & Pre School Facilities More than 10 Children	\$62.85
Schools	Set Case by Case
Industrial	Set Case by Case

**Note: 1.)** Metered Rates are per month. Charges above the minimum usage are based on a per 1000 C.F. amount.

**Note 2.)** The city will also collect \$13.15 per month from each account for the Capital Improvement Account.

**PLEASE GO TO FOLLOWING PAGE**

**CITY OF BIGGS – FEE SCHEDULES**

**REFUSE COLLECTION SERVICE RATES**

**AUTHORITY:** Council Motion-December 15, 2008

**EFFECTIVE DATE:** January 1, 2009

**COROLLARY  
REFERENCE:** None

<b>FEE CATEGORY</b>	<b>FEE</b>
---------------------	------------

Refuse Collection Service Rates:	\$20.11/Customer/Month
----------------------------------	------------------------

CITY OF BIGGS – MONTHLY SEWER RATES

Authority: Ordinance 357 passed May 14, 2013. Biggs Municipal Code section 10.05.240.

FEE CATEGORY	CUSTOMER SECTOR	MONTHLY RATE EFFECTIVE		
		7/1/2013	1/1/2015	1/1/2016
SEWER SERVICE CHARGE Per Connection Per Month	Residential/Apartment	\$50.44	\$55.90	\$65.90
	Tavern or Bar	\$66.03	\$73.17	\$86.26
	Beauty Salon at Home	\$56.72	\$62.87	\$74.11
	Churches and Halls	\$52.15	\$57.80	\$68.13
	Commercial	\$62.85	\$69.65	\$82.11
	Wild Rice Mill	\$50.44	\$55.90	\$65.90
	Specialty Rice Mill	\$81.69	\$90.53	\$106.73
	Sunwest Main Rice Mill	\$237.57	\$263.29	\$310.39
	Market	\$89.90	\$99.64	\$117.46
	Office Buildings	\$62.85	\$69.65	\$82.11
	Mini-Mart	\$72.87	\$80.76	\$95.21
	Service Station	\$76.59	\$84.88	\$100.06
	Industrial	\$96.90	\$107.39	\$126.60
	Memorial Hall	\$62.85	\$69.65	\$82.11
	Restaurant	\$79.81	\$88.44	\$104.27
	Day Care	\$93.48	\$103.59	\$122.13
	Elementary School	\$247.33	\$274.10	\$323.13
High School	\$247.33	\$274.10	\$323.13	
Minimum Charge- any user	\$50.44	\$55.90	\$65.90	
SEWER IMPROVEMENT FEE per Month per Connection		\$8.30	\$8.40	\$8.50

TOTAL CHARGE for sewer service shall be the sum of the Service Charge, and the Sewer Improvement Fee.

**CITY OF BIGGS – FEE SCHEDULES**

**ELECTRIC UTILITY SERVICE RATES – RESIDENTIAL  
(DOMESTIC AND APARTMENTS)  
2008- 2009 FISCAL YEAR**

**AUTHORITY:** Resolution No. 2003-25 ; Council Motion – 06/25/07 ; Resolution No. 2008-18

**EFFECTIVE DATE:** July 21, 2008 (applied to July bills in August, prorated)

**COROLLARY**

**REFERENCE:** Section 10.25.060 Biggs Municipal Code

<b>CATEGORY</b>	<b>RATES</b>	<b>AMOUNT</b>
Domestic and Apartment Services (Schedule DA – City):	Minimum Charge (Per Active Meter per Mo)	\$6.25
	Energy Charge – Per kWh First 400 kWh	\$0.1533
	Energy Charge – Per kWh Over 400 kWh	\$0.2065
Domestic and Apartment Services (Schedule NC-DA – Outside City):	Minimum Charge (Per Active Meter per Mo)	\$6.25
	Energy Charge – Per kWh First 400 kWh	\$0.1564
	Energy Charge – Per kWh Over 400 kWh	\$0.2235
Senior Rate:	Minimum Charge (Per Active Meter per Mo)	\$6.25
	Energy Charge – Per kWh First 400 kWh	0.1379
	Energy Charge – Per kWh Over 400 kWh	0.1856

**CONDITIONS:**

1. All new domestic or apartment units shall be separately metered. Where apartments are master metered, the minimum charge will be the number of apartments times the above minimum charge. Each energy block shall be multiplied by the number of apartments served.
2. These Schedules are applicable to domestic lighting, heating, cooking and single phase power.
3. Existing three phase domestic consumers served through a single meter will qualify for this rate.
4. Service under these schedules will be nominal single phase 120/140 volt alternating current.

Schedule No. CH-1-R  
Chico-Hamilton City Tariff Area  
RESIDENTIAL METERED SERVICE

This tariff has been filed with the California Public Utilities Commission and is effective 4/15/14, subject to refund, until final commission approval

APPLICABILITY

Applicable to all metered water service provided to single-family residential customers.

TERRITORY

Chico and vicinity, Butte County, and Hamilton City and vicinity, Glenn County.

RATES

Quantity Rates:

For the first 1,000 cubic feet, per 100 cubic feet.....	\$0.9209
For the next 2,100 cubic feet, per 100 cubic feet.....	0.9868
For all over 3,100 cubic feet, per 100 cubic feet.....	1.0525

Service Charge:

	Per Meter Per Month
For ..... 5/8 x 3/4 - inch meter	\$14.55
For ..... 3/4 - inch meter	21.83
For ..... 1 - inch meter	36.38
For ..... 1-1/2 - inch meter	72.75
For ..... 2 - inch meter	116.40
For ..... 3 - inch meter	218.26
For ..... 4 - inch meter	363.76
For ..... 6 - inch meter	663.37
For ..... 8 - inch meter	1,013.15
For ..... 10 - inch meter	1,673.30
For ..... 12 - inch meter	2,400.83
For ..... 14 - inch meter	3,273.85

The service charge is a readiness-to-serve charge which is applicable to all metered service and to which is added the charge for water used computed at the quantity rates.

SPECIAL CONDITIONS

1. All bills are subject to the reimbursement fees set forth on Schedule UF.
2. All bills are subject to any applicable surcharges/surcredits on Schedules RSF, LIRA-SC and AS.
3. Qualifying low-income individually metered residential customers are eligible for credits as shown on Schedule LIRA.
4. A capital infrastructure surcharge of \$0.0120 per 100 Cu. Ft. of water used is to be applied to the quantity rates, beginning December 20, 2010, the effective date of Advice Letter 2014, as authorized in Decision 08-07-008. (D)
5. A WRAM-MCBA true-up surcharge of \$0.1003 per 100 cu. ft. of water used is to be applied to the quantity rates for 12 months beginning March 15, 2013, the effective date of Advice Letter 2097. (D)
6. A WRAM-MCBA true-up surcharge of \$0.1377 per 100 cu. ft. of water used is to be applied to the quantity rates for 18 months beginning April 15, 2014, the effective date of Advice Letter 2119. (D)

chico

RE: Public Hearing re: Increase in Sewer Service Rates  
Meeting Date: June 7, 2011  
Page 2


	Current	FY 11-12	FY 12-13	FY 13-14
<b>Fixed Rate Payments</b>				
City Residential	\$16.75	\$20.44	\$22.08	\$22.74
Non-Residential	\$16.75	\$20.44	\$22.08	\$22.74
County Residential	\$17.44	\$21.28	\$22.98	\$23.67
<b>Variable Rate Payments (CCF's)</b>				
Restaurants	\$4.33	\$5.28	\$5.70	\$5.87
Markets & Bakeries	\$4.33	\$5.28	\$5.70	\$5.87
Car Washes	\$2.16	\$2.64	\$2.85	\$2.94
Other Commercial	\$2.00	\$2.44	\$2.63	\$2.71
Public Authority	\$2.00	\$2.44	\$2.63	\$2.71
Brewery	\$6.43	\$7.84	\$8.47	\$8.72

**PUBLIC CONTACT:**

Notification of tonight's public hearing was mailed to approximately 19,100 sewer customers on April 19, 2011.

Reviewed by:

Approved by:

  
 Fritz McKinley, Building & Development Services Director

  
 David Burkland, City Manager

**DISTRIBUTION:**

- City Clerk (18)
- BDSD McKinley
- GSDD Martinez
- FD Hennessy
- PM Hansen
- WWTP Manager Sulik
- AM Fields
- Tamara Miller, MPM Engineering

**ATTACHMENTS:**

- Public Hearing Notice

**FILE:** Sewer Service Rate Increase 2011

Schedule No. OR-1-R  
Oroville Tariff Area  
RESIDENTIAL METERED SERVICE

This tariff has been filed with the California Public Utilities Commission and is effective 4/15/14, subject to refund, until final commission approval

APPLICABILITY

Applicable to all metered water service provided to single-family residential customers.

TERRITORY

Oroville and vicinity, Butte County.

RATES

Quantity Rates:

For the first 800 cubic feet, per 100 cubic feet.....	\$1.6821
For the next 1,400 cubic feet, per 100 cubic feet.....	1.8060
For all over 2,200 cubic feet, per 100 cubic feet.....	2.1248

Service Charge:	Per Meter Per Month
For .....5/8 x 3/4 - inch meter	\$31.48
For .....3/4 - inch meter	47.22
For .....1 - inch meter	61.63
For .....1-1/2 - inch meter	124.96
For .....2 - inch meter	159.73
For .....3 - inch meter	296.55
For .....4 - inch meter	408.80
For .....6 - inch meter	671.69
For .....8 - inch meter	1,000.21
For .....10 - inch meter	3,620.04
For .....12 - inch meter	5,193.97
For .....14 - inch meter	7,082.69

The service charge is a readiness-to-serve charge which is applicable to all metered service and to which is added the charge for water used computed at the quantity rates.

SPECIAL CONDITIONS

1. All bills are subject to the reimbursement fees set forth on Schedule UF.
2. All bills are subject to any applicable surcharges/surcredits on Schedules RSF, LIRA-SC and AS.
3. Qualifying low-income individually metered residential customers are eligible for credits as shown on Schedule LIRA.
4. A capital infrastructure surcharge of \$0.0469 per 100 Cu. Ft. of water used is to be applied to the quantity rates, beginning December 17, 2010, the effective date of Advice Letter 2010-A, as authorized in Decision 07-12-055.
- (D)
5. A WRAM-MCBA true-up surcharge of \$0.1834 per 100 cu. ft. of water used is to be applied to the quantity rates for 18 months beginning March 15, 2013, the effective date of Advice Letter 2098.
6. A WRAM-MCBA true-up surcharge of \$0.2391 per 100 cu. ft. of water used is to be applied to the quantity rates for 18 months beginning April 15, 2014, the effective date of Advice Letter 2119. (N)

(To be inserted by utility:  
 Advice Letter No. 2119  
 Decision No. 08-02-036 & 12-04-048

*Issued by*  
**PAUL G. TOWNSLEY**  
N.A.M.E.  
*Vice President*  
N.N.E.

(To be inserted by Cal. P.U.C.)  
 Date Filed \_\_\_\_\_  
 Effective \_\_\_\_\_  
 Resolution No. \_\_\_\_\_

Angel McCurdy

City of Oroville Sewer

**From:** Diane M. Howard <howarddm@cityoforoville.org>  
**Sent:** Monday, June 09, 2014 11:27 AM  
**To:** Angel McCurdy  
**Subject:** RE: Sewer Rate

SCOR rate's will remain the same so \$355.08 is accurate.

0 • C

*Diane M. Howard*

355.08 ÷  
12.00 =  
29.59 \*

---

**From:** Angel McCurdy [mailto:AngelM@Butte-Housing.com]  
**Sent:** Monday, June 09, 2014 9:26 AM  
**To:** Diane M. Howard  
**Subject:** RE: Sewer Rate

Hi Diane ~ Happy Monday.

Did SCOR get back to you yet?

~Angel

~Life is for participating, not for spectating.~

---

**From:** Diane M. Howard [mailto:howarddm@cityoforoville.org]  
**Sent:** Friday, June 06, 2014 9:52 AM  
**To:** Angel McCurdy  
**Subject:** RE: Sewer Rate

ok, hopefully I hear from SCOR today. I will let you know ASAP!

*Diane M. Howard*

---

**From:** Angel McCurdy [mailto:AngelM@Butte-Housing.com]  
**Sent:** Friday, June 06, 2014 9:50 AM  
**To:** Diane M. Howard  
**Subject:** RE: Sewer Rate

Hi Diane,

Thanks for the info. We are updating our utility allowances next week, so if you could let me know as soon as you do, I'd appreciate it.

Angel McCurdy  
Accounting Clerk



**THERMALITO WATER & SEWER DISTRICT  
410 GRAND AVENUE  
OROVILLE, CA 95965  
PHONE: (530) 533-0740 FAX (530) 533-9243**

*"Serving the Community since 1922"*

**MONTHLY WATER RATES**

1 cubic foot equals 7.48 gallons  
Water is billed at \$0.74 per hundred cubic feet.

<u>METER SIZE</u>	<u>MINIMUM CHARGE</u>
3/4" .....	\$ 28.84
1" .....	\$ 32.96
1 1/2" .....	\$ 41.20
2" .....	\$ 51.50
3" .....	\$116.39
4" .....	\$151.39
6" .....	\$267.80

- ❖ Multiple Units operating from a common meter are charged **\$22.66 additional, per unit.**
- ❖ Charges billed include prior month's usage and are due and payable upon receipt.
- ❖ After-hours service calls are billed at \$70.00 per hour, 2-hour minimum.
- ❖ Accounts are in Property Owner's name only.
- ❖ Lock-off charge for non-payment: \$65.00 per occurrence.
- ❖ Customer is responsible for all damage to meter and/or meter devices.

*Revised/Effective: July 1, 2010*

**MONTHLY SEWER RATES**

Sewerage-Commission, Oroville Region

Waste Water Treatment.....	\$ 8.80 per EDU
T.W.S.D. Bonds-Collection System Construction	\$ 5.00 per EDU
T.W.S.D. Operation & Maintenance.....	<u>\$13.75 per EDU</u>
	<b>\$27.35 per EDU</b>

- ❖ The Owner is responsible for maintenance of service lines to point of connection with the mainline.
- ❖ After-hours service calls are billed at \$70.00 per hour, 2-hour minimum.
- ❖ Monthly charges apply to each EDU, empty or occupied.
- ❖ EDU = Equivalent Dwelling Unit.

*Revised/Effective: July 1, 2010*  
Word:Pam:Rate Schedule Water & Sewer